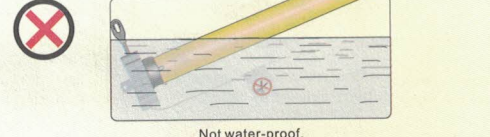
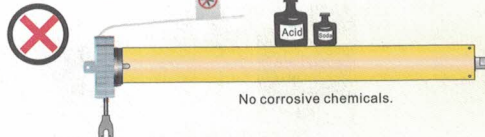
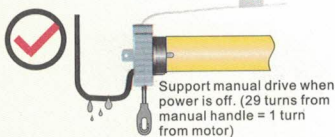
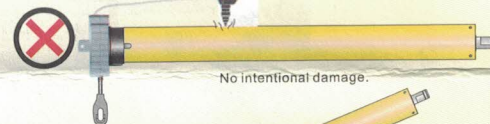
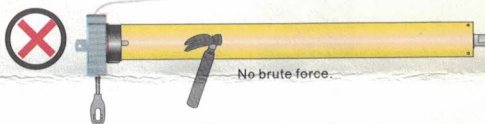
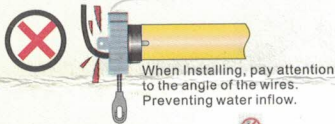
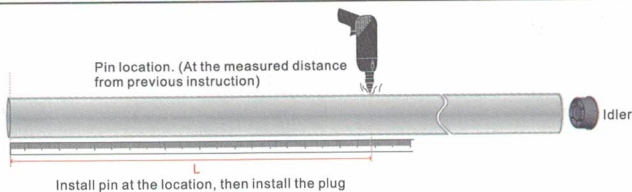
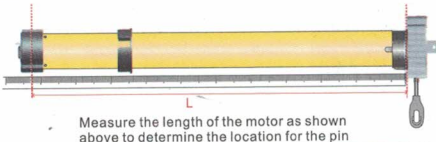


- Max Limit 20 turns
- Support manual drive when power is off. (29 turns from manual handle = 1 turn from motor)
- Can be applied to Roller Shutter, Awning, Garage Door, etc.
- It was composed of "Fixed Rotor, Braking system, Speed Reducer, Mechanical Limit". It is compatible with 433.92MHz radio frequency
- Low Noise. Precise limit location. Non-noticable in complete product. Easy Installation.
- Built-in overheat protection. Continuous working time: 4-6min. Max working heat: 110 Celsius. Resume working condition after cool down.

Attention:

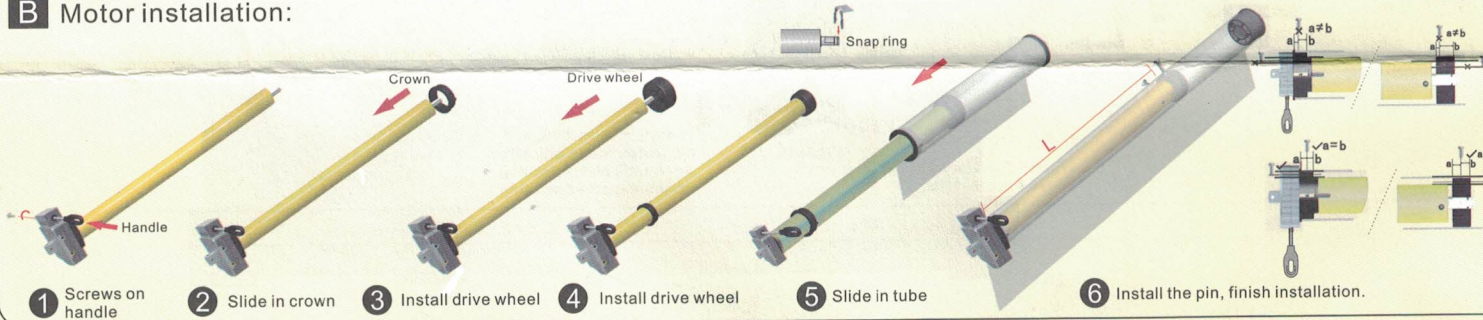


A Preparation of tube:

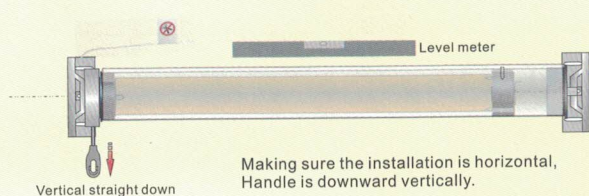
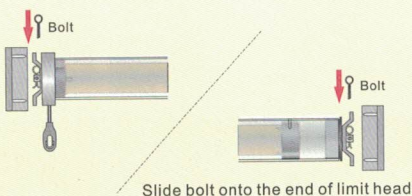


| Type of Tube | Pin | Legend |
|-------------------|-----|--------|
| Round Tube | Yes | |
| 8 corrugated tube | No | |
| Tube with groove | No | |

B Motor installation:

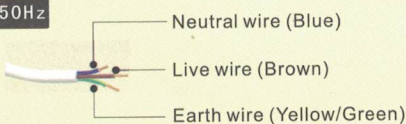


C Tube Installation:

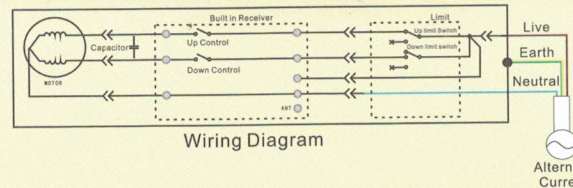
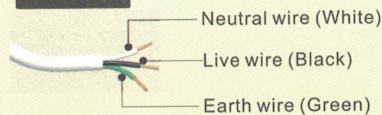


D Wiring:

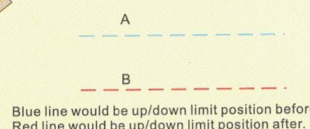
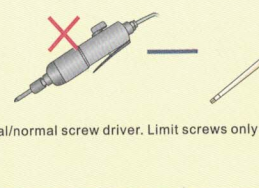
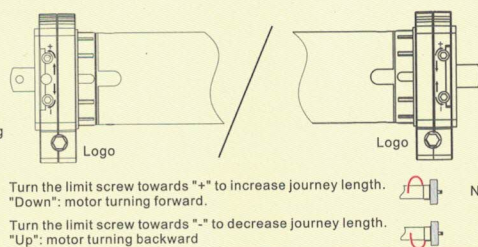
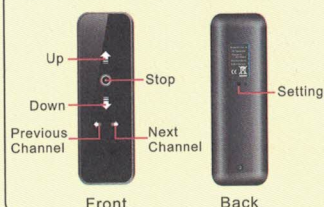
230V/50Hz



120V/60Hz

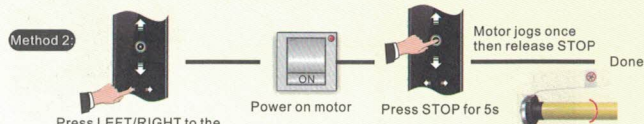
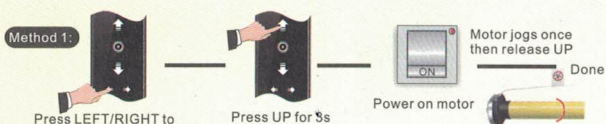


Instruction for tuning

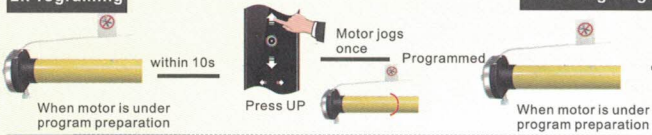


Settings

1. Get into program preparation



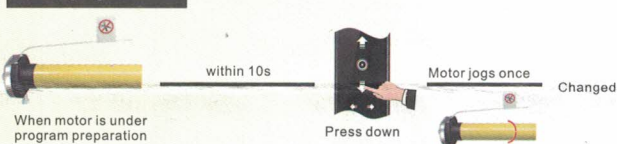
2. Programing



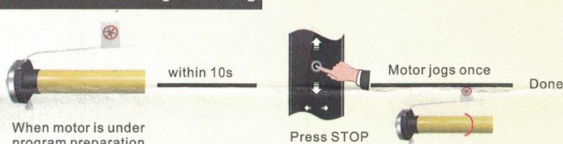
3. Deleting single/all codes



4. Changing direction

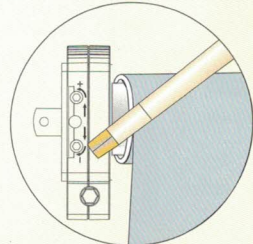
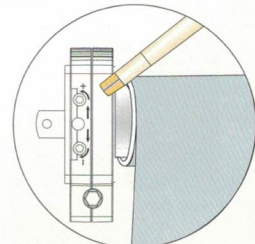
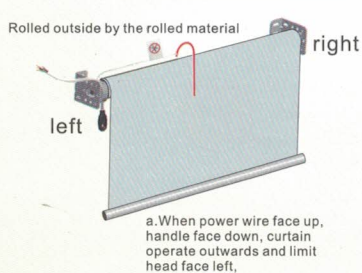


5. Dot/continuous moving switching

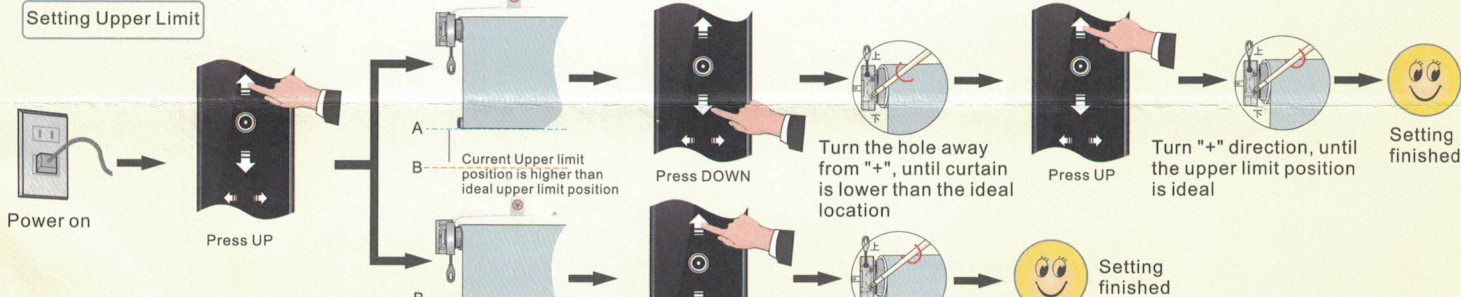


E Limit Setting

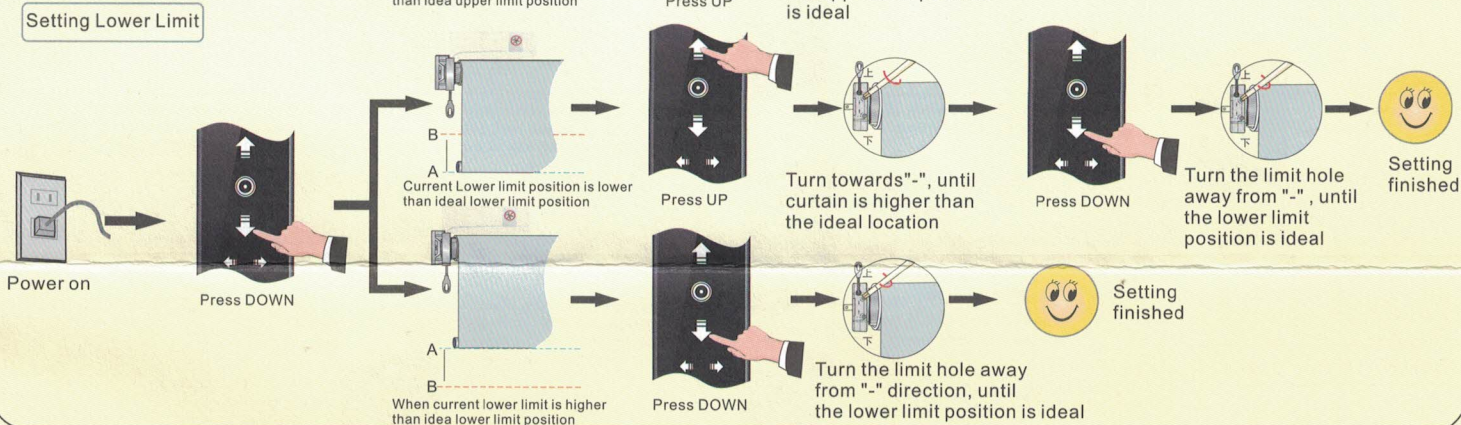
Method 1:



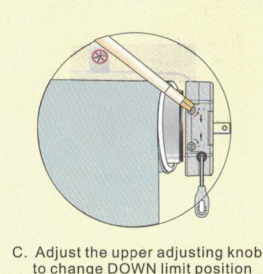
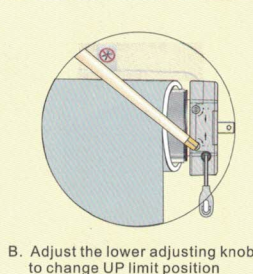
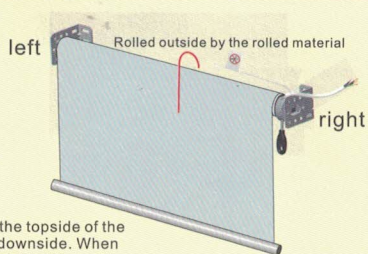
Setting Upper Limit



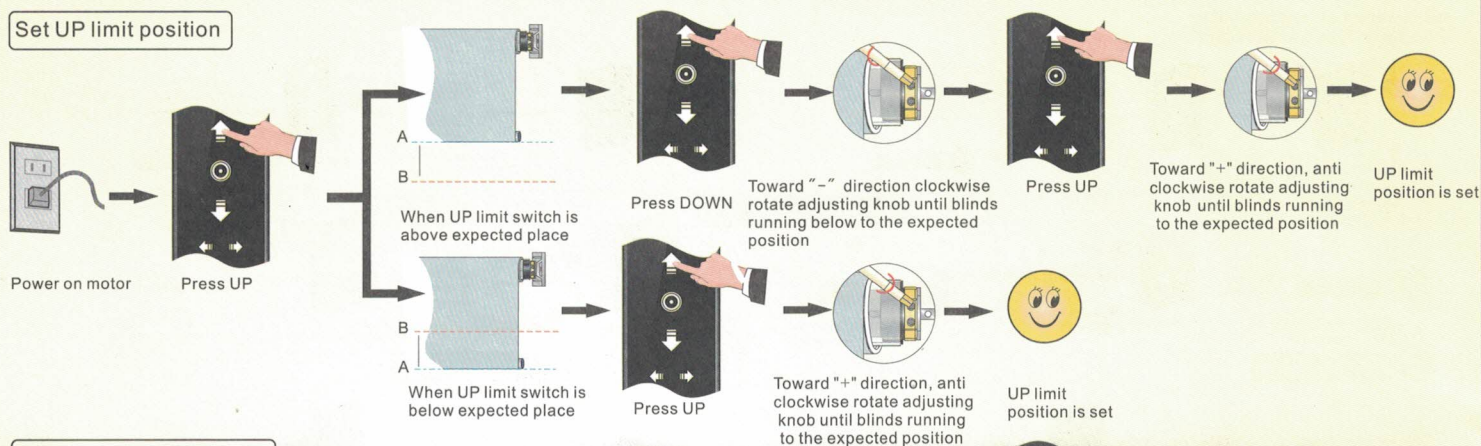
Setting Lower Limit



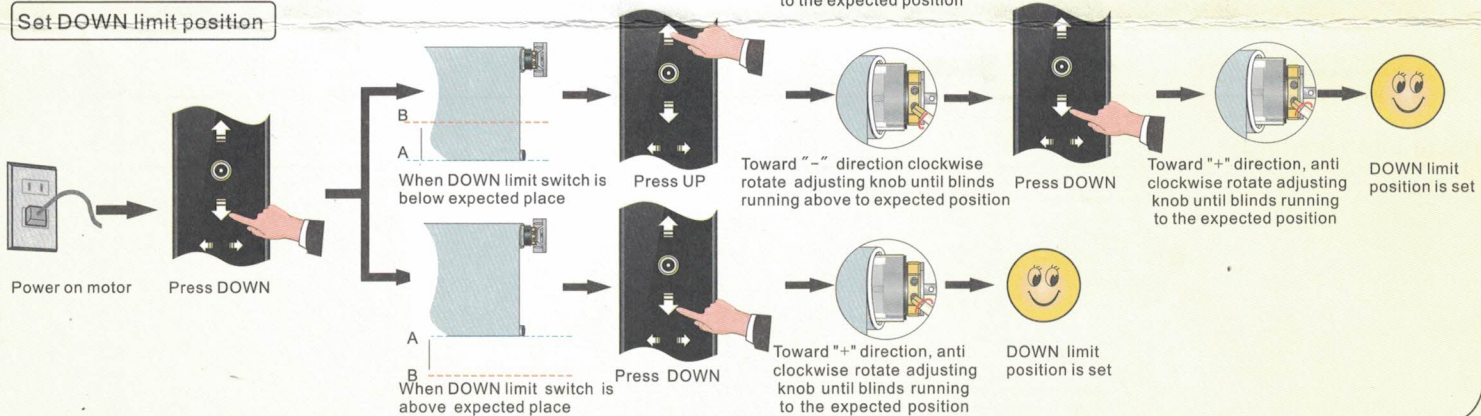
Method 2:



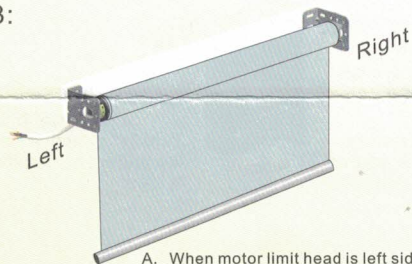
Set UP limit position



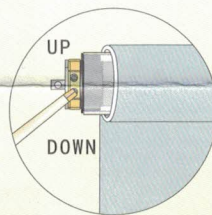
Set DOWN limit position



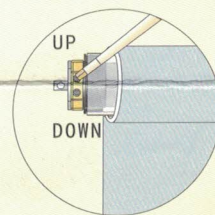
Method 3:



A. When motor limit head is left side, blinds inward rolling move.

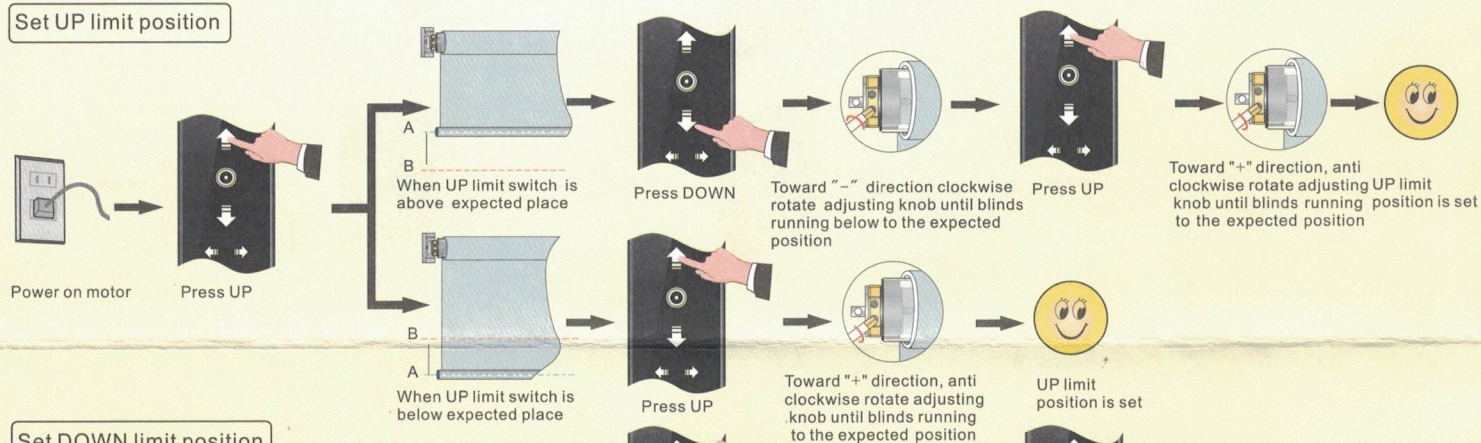


B. Adjust the UP adjusting knob to change DOWN limit position

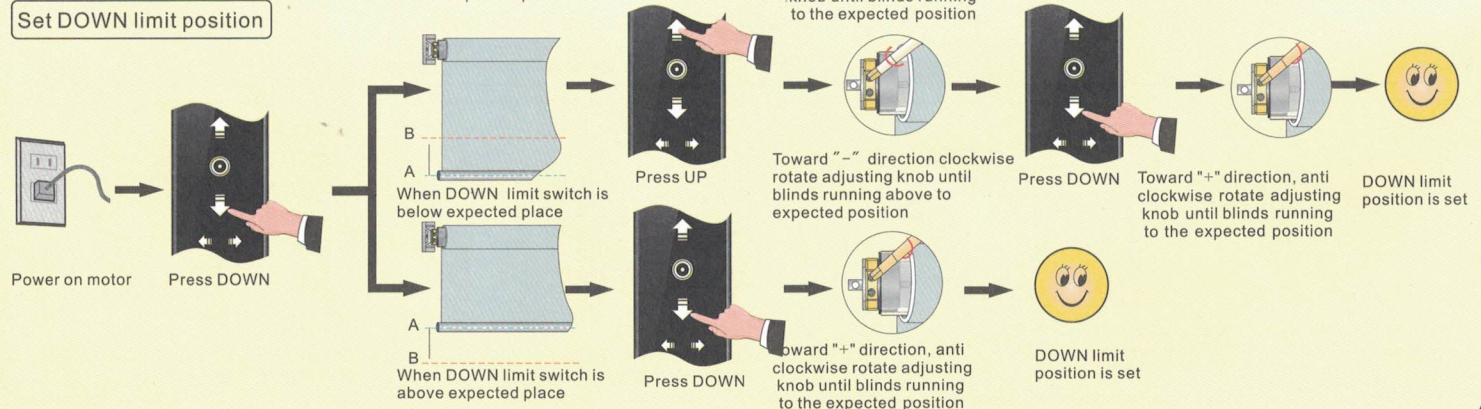


C. Adjust the DOWN adjusting knob to change UP limit position

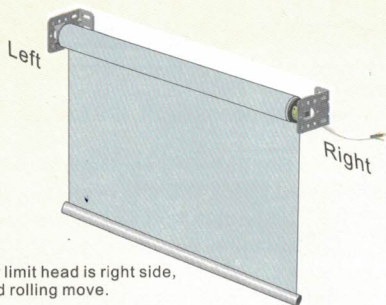
Set UP limit position



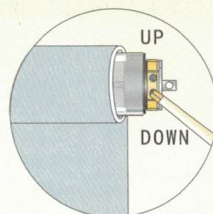
Set DOWN limit position



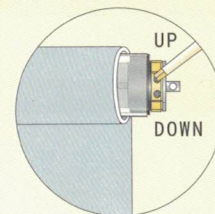
Method 4:



A. When motor limit head is right side, blinds inward rolling move.

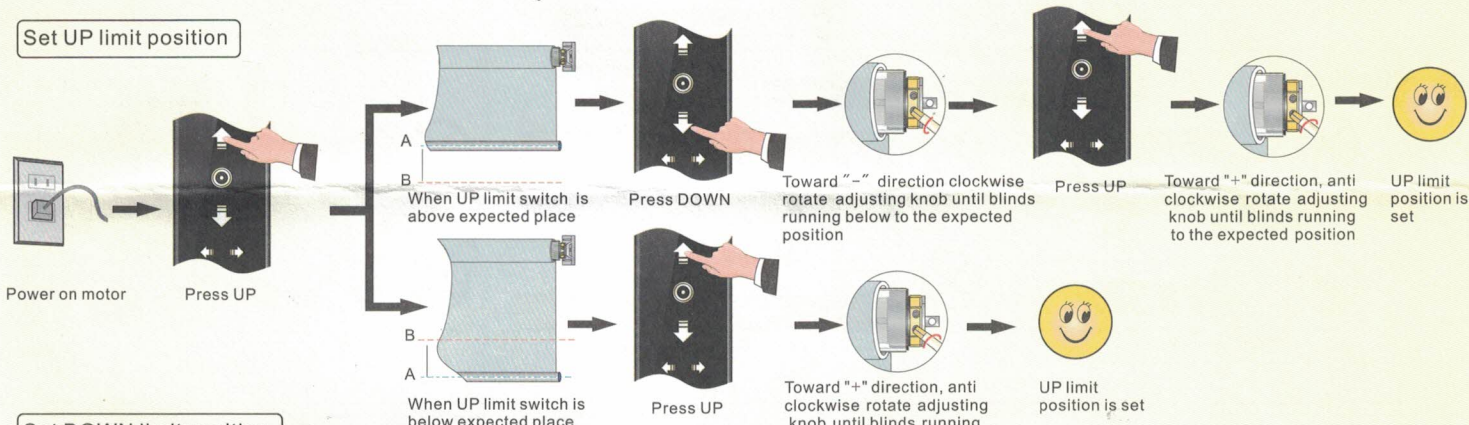


B. Adjust the UP adjusting knob to change DOWN limit position

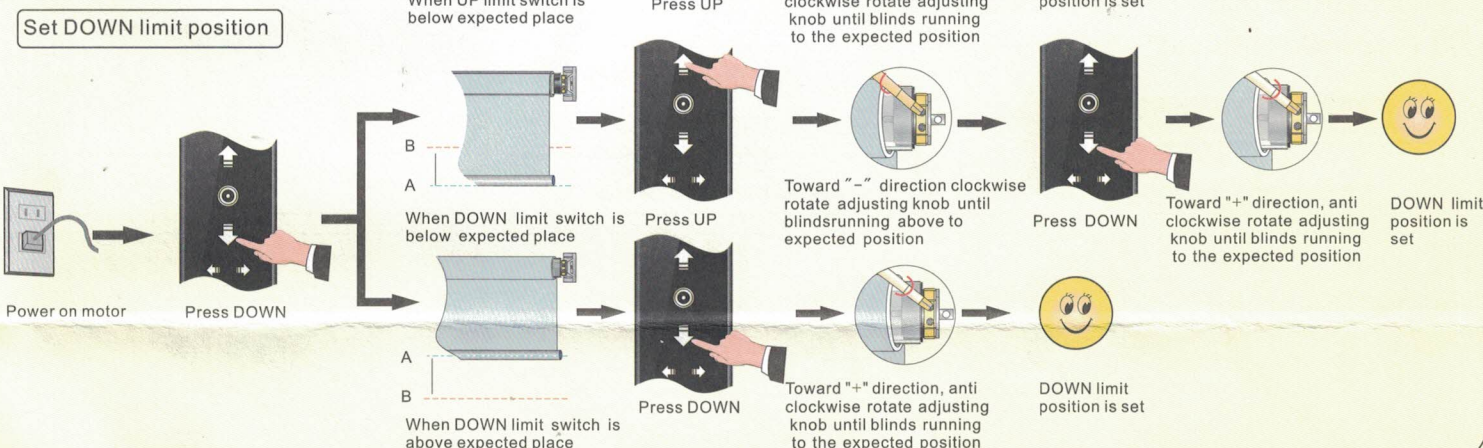


C. Adjust the DOWN adjusting knob to change UP limit position

Set UP limit position



Set DOWN limit position



Remark: Except the above four installation methods , you can also adjust the other knob (around the power), the direction to adjust the knob is reversal.

F Troubleshooting

| Items | Problem | Matter | Shooting |
|-------|--|---|---|
| 1 | Powered on but the motor failed to work or work slowly. | a. The power's voltage and the motor's voltage are not compatible. b. Overload. c. Jamming caused by improper installation. | a. Supply the proper voltage. b. Replace the motor torque to meet with loading. c. Make sure that every part of the motor is installed correctly. |
| 2 | Powered on however the motor can only run towards one direction. | The limit switch fail working dirstion is not opened. | Reversely rotate the crown about 1-2circles against its present direction. |
| 3 | The motor stops working suddenly. | a. The motor is under the situation of overheating protection. b. Power is off. c. It's at its limit position. | a. Wait about 3-10 minutes till the motor cool down. b. The motor will continue to work when powered on. c. Depend on personnel requirements to decide if it is necessary to adjust the limit control button. |
| 4 | Press controller's/switch's DOWN button, blinds UP running. | Inside the controller, the wire is wrongly connected. | Exchange the connection of black and blue wires. |